

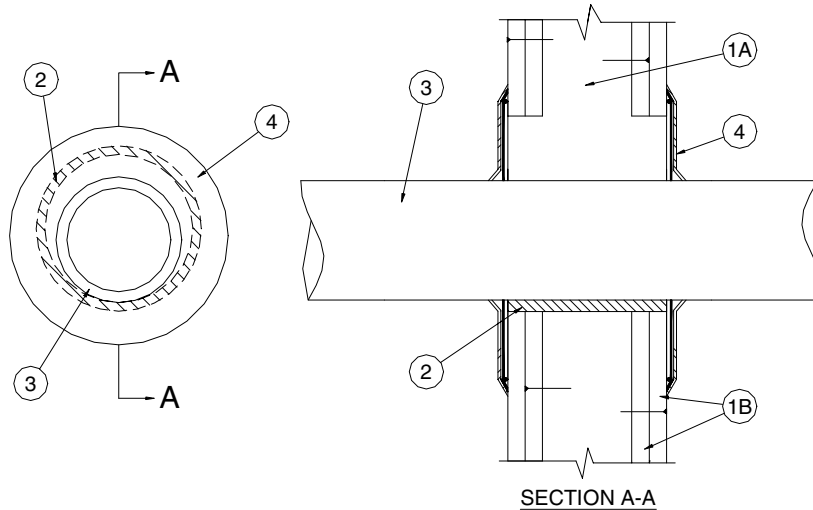
Eastern Wire + Conduit

FIRESTOP Product Specifications

SYSTEM NO. W-L-1305

F Rating - 1 and 2 Hr (see item 1)
T Rating - 0 Hr

GUIDE XHEZ THROUGH - PENETRATION FIRESTOP SYSTEMS



1. **Wall Assembly** - The fire-rated gypsum board/stud wall assembly shall be constructed of the materials and in the manner specified in the individual U300 or U400 Series Wall and Partition Designs in the UL Fire Resistance Directory and shall include the following construction features:

- A. **Studs** - Wall framing may consist of either wood studs or steel channel studs. Wood studs to consist of nom 2 by 4 in. lumber spaced 16 in. OC. Steel studs to be min 3-5/8 in. wide and spaced max 24 in. OC.
- B. **Gypsum Board*** - One or two layers of nom 1/2 or 5/8 in. thick gypsum board, as specified in the individual Wall and Partition Design. Max diam of opening is 12 in.

The hourly F Rating of the firestop system is equal to the hourly fire rating of the wall assembly in which it is installed.

2. **Sleeves** - (Optional) - One of the following types and sizes of sleeves may be used:
 - A. **Through- Penetrating Products*** - Nom 4 in. diam (or smaller) solid or longitudinal split sleeve fiction fit into place. Sleeve installed flush with each surface of the wall.

Eastern Wire + Conduit - Quickstop Sleeve

tyco

Electrical &
Metal Products

1-800-483-3473

www.easternwire.com



Eastern Wire + Conduit

FIRESTOP Product Specifications

B. **Metallic Sleeve** – Nom 9 in. diam cylindrical sleeve fabricated from min 0.027 in. thick (No. 24 gauge) galv sheet steel friction fit into opening. The ends of the sleeve to extend min 0 (flush) to max 1-13/16 in. beyond each surface of the wall.

3. **Through Penetrants** - One metallic pipe, conduit or tubing to be installed concentrically or eccentrically within the firestop system. The annular space between pipe, conduit or tubing and periphery of opening shall be min 0 in. (point contact) to max 2 in. Pipe, conduit or tubing to be rigidly supported on both sides of wall assembly. The types and sizes of metallic pipes, conduits or tubing may be used in the following opening sizes:

Type and size of penetrants	Max Diam of Opening, In.
A. Steel Pipe Nom 3 in. diam (or smaller) Schedule 5 (or heavier) steel pipe. B. Iron Pipe Nom 3 in. diam (or smaller) cast or ductile iron pipe. C. Conduit Nom 3 in. diam (or smaller) steel electrical metallic tubing or steel conduit. D. Copper Tubing Nom 3 in. diam (or smaller) Type DWV (or heavier) copper tubing. E. Copper Pipe Nom 3 in. diam (or smaller) Regular (or heavier) copper pipe.	4
A. Steel Pipe Nom 3 to 6 in. diam Schedule 5 (or heavier) steel pipe. B. Iron Pipe Nom 3 to 6 in. diam cast or ductile iron pipe. C. Conduit Nom 3 to 4 in. diam steel electrical metallic tubing or 3 to 6 in. diam steel conduit. D. Copper Tubing Nom 4 to 6 in. diam Type DWV (or heavier) copper tubing. E. Copper Pipe Nom 3 to 6 in. diam Regular (or heavier) copper pipe.	7-1/2
A. Steel Pipe Nom 8 to 10 in. diam Schedule 5 (or heavier) steel pipe. B. Iron Pipe Nom 8 to 10 in. diam cast or ductile iron pipe.	12

4. **Firestop Devices*** - Firestop device sized to fit specific diam of the through penetrant and installed on both sides of wall abutting gypsum board or sleeve in accordance with the installation instructions provided with the product. Collar to be positioned without removing the packaging label. Slide the Anchor over the penetrating item such that the black intumescent pad will contact the sleeve or wall assembly. Remove label. Position collar firmly against sleeve or wall assembly. Firmly depress a minimum of three equally spaced barbs to secure the collar to the penetrant. For collar without barbs and as an alternate to depressing the barbs, a stainless steel hose clamp is to be used in accordance with the installation instructions.

Eastern Wire + Conduit – Raceway collar

*Bearing the UL Classification Mark

tyco
 Electrical &
 Metal Products

1-800-483-3473
www.easternwire.com

