

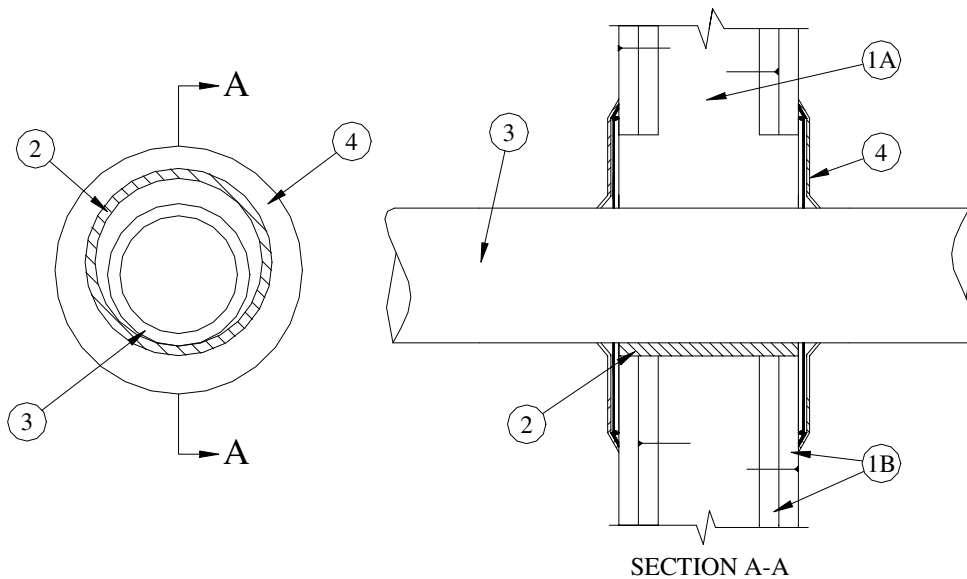
# Eastern Wire + Conduit

## FIRESTOP Product Specifications

### SYSTEM NO. W-L-1006

<b>F Rating</b>	- 1 and 2 Hr (see item 1)
<b>FT Rating</b>	- 0 Hr
<b>FH Rating</b>	- 1 and 2 Hr (see item 1)
<b>FTH Rating</b>	- 0 Hr

GUIDE XHEZ 7 THROUGH - PENETRATION FIRESTOP SYSTEMS  
CERTIFIED FOR CANADA



- Wall Assembly** - The fire-rated gypsum board/stud wall assembly shall be constructed of the materials and in the manner specified in the individual U300 or U400 Series Wall and Partition Designs in the UL Fire Resistance Directory and shall include the following construction features:
  - Studs** - Wall framing may consist of either wood studs or steel channel studs. Wood studs to consist of nom 51 by 102 mm (2 by 4 in.) lumber spaced 406 mm (16 in.) OC. Steel studs to be min 92 mm (3-5/8 in.) wide and spaced max 610 mm (24 in.) OC.
  - Gypsum Board\*** - One or two layers of nom 13 or 16 mm (1/2 or 5/8 in.) thick gypsum board, as specified in the individual Wall and Partition Design. Max diam of opening is 102 mm (4 in.).

**tyco**  
Electrical &  
Metal Products

1-800-483-3473  
[www.easternwire.com](http://www.easternwire.com)



## Eastern Wire + Conduit

### FIRESTOP Product Specifications

**The hourly F and FH Ratings of the firestop system are equal to the hourly fire rating of the wall assembly in which it is installed.**

2. **Sleeves** - (Optional) - One of the following types and sizes of sleeves is to be used:
- A. Through-Penetrating Products\*** - Nom 102 mm (4 in.) diam (or smaller) solid or longitudinal split sleeve friction fit into place. Sleeve installed flush with each surface of the wall.

#### Eastern Wire + Conduit - Quickstop Sleeve

- B. Metallic Sleeve** - Cylindrical sleeve fabricated from min 0.686 mm (0.027 in.) thick (No. 24 gauge) galv sheet steel and friction fit into wall. The ends of the sleeve to extend min 0 mm (0 in.) flush to max 46 mm (1-13/16 in.) beyond each surface of the wall.
- C. 3. Through Penetrants** - One metallic pipe, conduit or tubing to be installed concentrically or eccentrically within the firestop system. The space between pipe, conduit or tubing and periphery of opening shall be min 0 mm (0 in.) point contact to max 22 mm (7/8 in.). Pipe, conduit or tubing to be rigidly supported on both sides of wall assembly. The following types and sizes of metallic pipes, conduits or tubing may be used:
- A. **Steel Pipe** - Nom 76 mm (3 in.) diam (or smaller) Schedule 5 (or heavier) steel pipe.
- B. **Iron Pipe** - Nom 76 mm (3 in.) diam (or smaller) cast or ductile iron pipe.
- C. **Conduit** - Nom 76 mm (3 in.) diam (or smaller) steel electrical metallic tubing or steel conduit.
- D. **Copper Tubing** - Nom 76 mm (3 in.) diam (or smaller) Type DWV (or heavier) copper tubing.
- E. **Copper Pipe** - Nom 76 mm (3 in.) diam (or smaller) Regular or (or heavier) copper pipe.
4. **Firestop Devices\*** – Firestop device sized to fit specific diam of the through penetrant and installed on both sides of wall abutting gypsum board or sleeve. Collar to be positioned without removing the packaging label. Slide the collar over the penetrating item such that the black intumescent pad will contact the sleeve or wall assembly. Remove label. Position collar firmly against sleeve or wall assembly. Firmly depress 3 equally spaced barbs to secure the collar to the penetrant.

#### Eastern Wire + Conduit – Raceway Collar

\* Bearing the UL Classification Marking

**tyco**  
Electrical &  
Metal Products

1-800-483-3473  
[www.easternwire.com](http://www.easternwire.com)

