

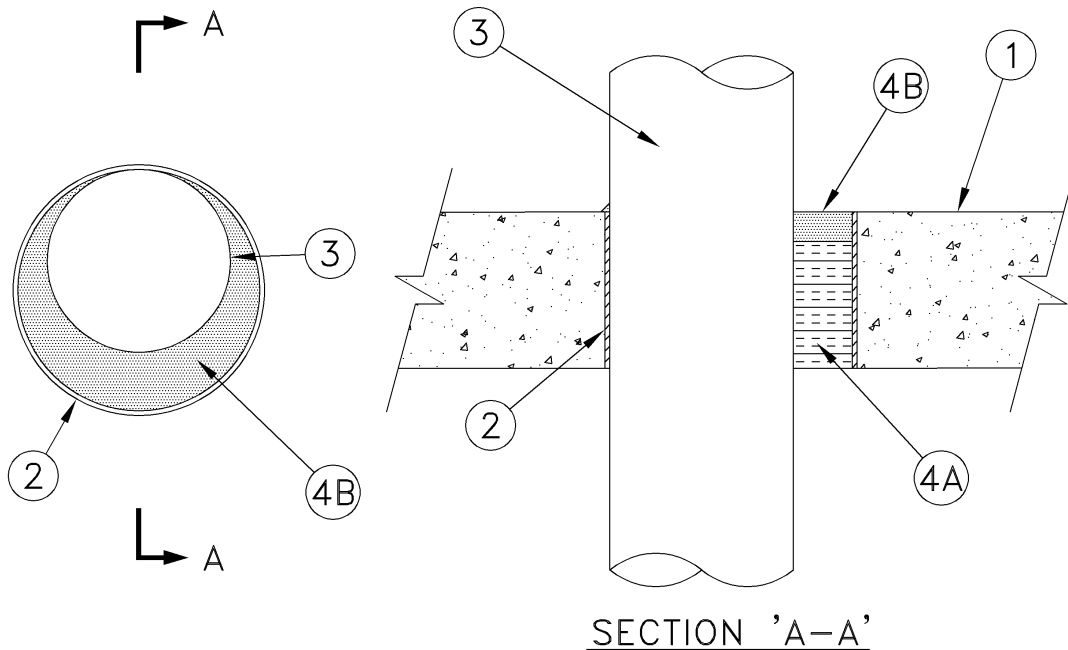
Eastern Wire + Conduit

FIRESTOP Product Specifications

SYSTEM No. SP1023

(For Vertical or Horizontal Separations)

F Rating	- 2 hr
FH Rating	- 0 hr and 2 hr (See Item 4A)
FT and FTH Ratings	- 0 hr



1. **Floor or Wall Assembly** – Minimum 64 mm thick wall or 76 mm thick floor of reinforced low or normal density (1600 to 2400 kg/m³) concrete. Wall may also be constructed of 200 mm thick concrete blocks. Maximum diameter of opening is 102 mm.
2. **Metallic Sleeve (optional)** – Cylindrical sleeve fabricated from minimum 0.71 mm thick (No. 24 gauge) galvanized sheet steel. Sleeve cast or grouted into floor or wall assembly, flush with floor or wall surfaces. The inside diameter of sleeve shall be 22 mm larger than the diameter of the through penetrant.

tyco
Electrical &
Metal Products

1-800-483-3473
www.easternwire.com

EASTERN
wire + conduit

Copyright © 2004 by Eastern Wire + Conduit. All rights reserved.
Eastern Wire + Conduit reserves the right to change product design and specifications without notice.
Eastern Wire + Conduit and Tyco are registered trademarks or trademarks of Tyco and/or its affiliates in the United States, Canada, and/or other countries.
All other brand names, product names, or trademarks belong to their respective holders.

Eastern Wire + Conduit

FIRESTOP Product Specifications

3. **Through Penetrants** – One pipe, conduit or tubing may be installed within the opening. The annular space between pipe, conduit or tubing and periphery of opening shall be minimum 0 mm to maximum 22 mm. Pipe, conduit or tubing to be rigidly supported on both sides of floor or wall assembly. The following types and sizes of metallic pipes, conduits or tubing may be used:
 - A. **Steel Pipe** - Nominal 76 mm diameter (or smaller) Schedule 5 (or heavier) steel pipe.
 - B. **Conduit** – Nominal 76 mm diameter (or smaller) steel electrical metallic tubing or steel conduit.
 - C. **Copper Tubing** – Nominal 76 mm diameter (or smaller) Type M (or heavier) copper tubing.
 - D. **Copper Pipe** – Nominal 76 mm diameter (or smaller) Type DWV, regular (or heavier) copper pipe.
4. **Firestop System** – The firestop system shall consist of the following:
 - A. **Packing Material** – Minimum 52 mm thickness of minimum 64 kg/m³ mineral wool batt insulation or minimum 22 mm diameter polyethylene backer rod firmly packed into opening as a permanent form. Packing material to be recessed from top surface of floor or from both surfaces of wall to accommodate the required thickness of fill material. **When mineral wool insulation is used, the FH rating is 2 h, when polyethylene backer rod is used, the FH rating is 0 h.**
 - B. **Firestop System Component** – (Guide No. 40 U19.13). Minimum 12 mm thickness of **Eastern Wire + Conduit IC 300 Sealant** applied within the annulus, flush with top surface of floor or with both surfaces of wall assembly. At the point of contact of pipe and periphery of the opening, a 6 mm thick bead of the sealant shall be applied at the top floor surface or both wall surfaces.

tyco

*Electrical &
Metal Products*

1-800-483-3473

www.easternwire.com

