

Eastern Wire + Conduit

FIRESTOP Product Specifications

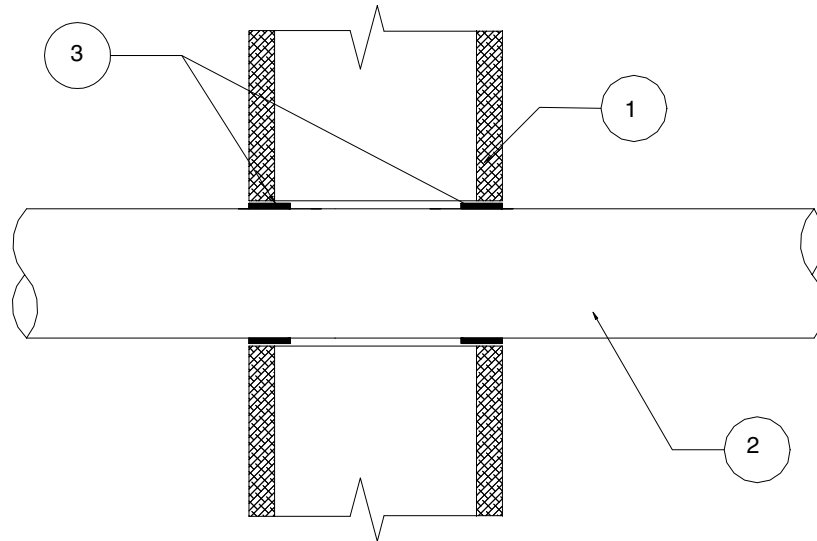
Design No: RQ/PV 60-01

Vertical (wall ratings: see table below)

Hole size see Item 3

Tested to ASTM E-814 and CAN4-S115M at 2.5 Pa positive pressure (0.01 in water column)

Penetrant	Pipe Size	CAN/ULC-S115 CAN4-S115 F, FH, FT, FTH	ASTM E-814 F, T
copper pipe/tube	≤ 3"	1 hr	1 hr
EMT Conduit	≤ 4"	1 hr	1 hr
iron pipe	≤ 6"	1 hr	1 hr
cast iron soil pipe	≤ 6"	1 hr	1 hr
CPVC	≤ 2"	N/A	1 hr



- 1 **Wall Assembly:** Code conforming 1 hr rated gypsum wallboard wall, framed with nominal 2 in. x 4 in. wood or steel studs.
2. **Penetrant:** (See table of ratings) CPVC Schedule 40 pipe, closed system (US only). Copper pipe, copper tube, iron pipe, EMT conduit, cast iron soil pipe, DWV or closed (process or supply) applications. Fittings optional within the piping assembly.

tyco
Electrical &
Metal Products

1-800-483-3473
www.easternwire.com



Eastern Wire + Conduit

FIRESTOP Product Specifications

- 3 **Firestop System Component:** Eastern Wire + Conduit Quickroll installed on both sides of wall, within the fire separation and flush to outside surface of wall. Eastern Wire + Conduit IC Sealant may be installed to improve smoke sealing characteristics of the firestop system if desired.

Firestop	Max. Hole Size
1 wrap Quickroll	Pipe O.D. + 3/8"
2 wraps Quickroll	Pipe O.D. + 5/8"

tyco
Electrical &
Metal Products

1-800-483-3473
www.easternwire.com

