

Eastern Wire + Conduit

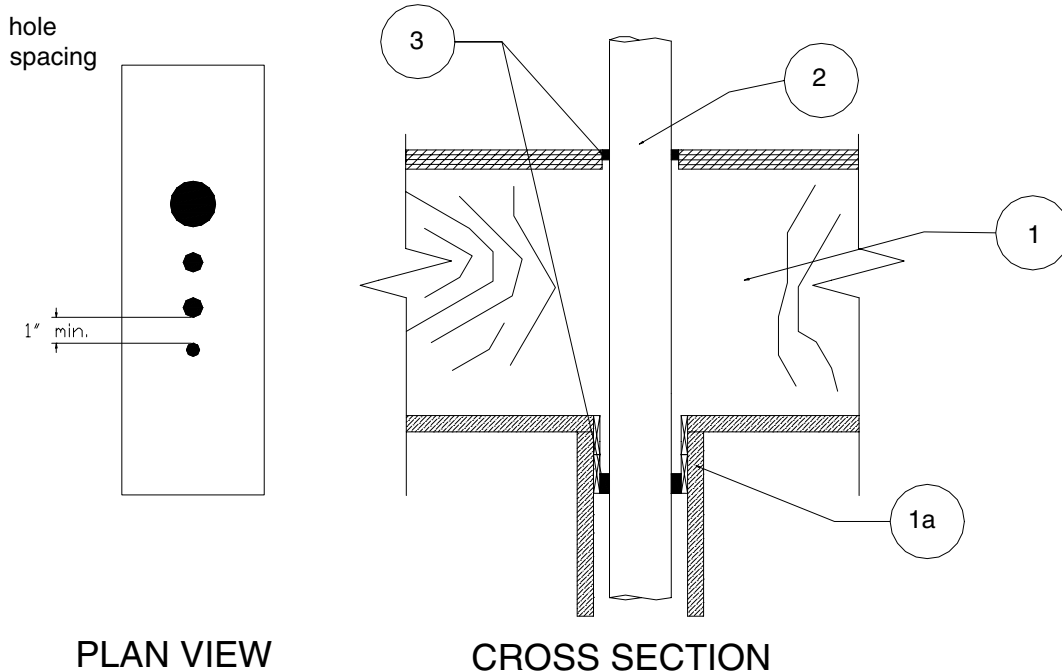
FIRESTOP Product Specifications

Design No: RQ/PH 60-04

Horizontal or vertical (floor or wall ratings - see table)

Hole size - see table

Tested to ASTM E-814 and CAN4-S115M at 50 Pa positive pressure



- 1 **Floor/Ceiling Assembly:** Code conforming 1 hr rated floor/ceiling assembly, framed with minimum nominal 2" x 10" solid sawn or manufactured wood joists. Topping optional (not shown).
- 1a **Chase Wall:** Rated or non-rated wood or steel gypsum wallboard assembly to have firestop system installed as detailed in Item 3, within the annular space in the single and double top plates (or plywood floor).
2. **Penetrant:** Multiple penetrations with any combination up to a maximum of four (4) penetrants, composed of the following;
 - (a) #14 AWG /2 electrical cable
 - (b) PEX up to 1/2" ID
 - (c) maximum 1 1/2" copper pipe or tubing
 - (d) maximum 3" diameter iron pipe, EMT or cast iron soil pipe

Note: 3" diameter penetrants can only be used when top plates/soles plates are greater than nominal 4" widths.

Minimum allowable distance between penetrants to be 1".

tyco
Electrical &
Metal Products

1-800-483-3473
www.easternwire.com



Eastern Wire + Conduit

FIRESTOP Product Specifications

Design No: RQ/PH 60-04 – *Continued*

- 3 **Firestop System Component:** Eastern Wire + Conduit IC Sealant installed at the both double top plate and single sole plate locations. Sealant to be installed to ¼” depth within the annular space, according to manufacturer’s installation instructions.

Penetrant	Nominal Size	CAN/ULC-S115 CAN4-S115 F, FH, FT, FTH	ASTM E-814 F, T	Maximum Hole Size
#14 AWG /2 electrical cable	-	1 hr	1 hr	½”
PEX	⅛”	1 hr	1 hr	⅜”
	¼”	1 hr	1 hr	½”
	⅜”	1 hr	1 hr	⅝”
	½”	1 hr	1 hr	¾”
copper pipe or tube	½”	1 hr, 1 hr, 0, 0	1 hr, 0	¾”
	¾”	1 hr, 1 hr, 0, 0	1 hr, 0	1”
	1”	1 hr, 1 hr, 0, 0	1 hr, 0	1 ¼”
	1 ¼”	1 hr, 1 hr, 0, 0	1 hr, 0	1 ½”
	1 ½”	1 hr, 1 hr, 0, 0	1 hr, 0	1 ¾”
IPS pipe	½”	1 hr, 1 hr, 0, 0	1 hr, 0	1”
	¾”	1 hr, 1 hr, 0, 0	1 hr, 0	1 ⅛”
	1”	1 hr, 1 hr, 0, 0	1 hr, 0	1 ½”
	1 ¼”	1 hr, 1 hr, 0, 0	1 hr, 0	1 ¾”
	1 ½”	1 hr, 1 hr, 0, 0	1 hr, 0	2”
	2”	1 hr, 1 hr, 0, 0	1 hr, 0	2 ½”
	2 ½”	1 hr, 1 hr, 0, 0	1 hr, 0	3”
EMT conduit	½”	1 hr, 1 hr, 0, 0	1 hr, 0	⅞”
	¾”	1 hr, 1 hr, 0, 0	1 hr, 0	1”
	1”	1 hr, 1 hr, 0, 0	1 hr, 0	1 ¼”
	1 ¼”	1 hr, 1 hr, 0, 0	1 hr, 0	1 ⅝”
	1 ½”	1 hr, 1 hr, 0, 0	1 hr, 0	1 ⅞”
	2”	1 hr, 1 hr, 0, 0	1 hr, 0	2 ⅜”
	2 ½”	1 hr, 1 hr, 0, 0	1 hr, 0	3”
	3”	1 hr, 1 hr, 0, 0	1 hr, 0	3 ⅝”
cast iron soil pipe	1 ½”	1 hr, 1 hr, 0, 0	1 hr, 0	2”
	2”	1 hr, 1 hr, 0, 0	1 hr, 0	2 ½”
	3”	1 hr, 1 hr, 0, 0	1 hr, 0	3 ½”

Note: 3” diameter penetrants can only be used when top plates/soles plates are greater than nominal 2” x 4” widths.

tyco
Electrical &
Metal Products

1-800-483-3473
www.easternwire.com

