

Eastern Wire + Conduit

FIRESTOP Product Specifications

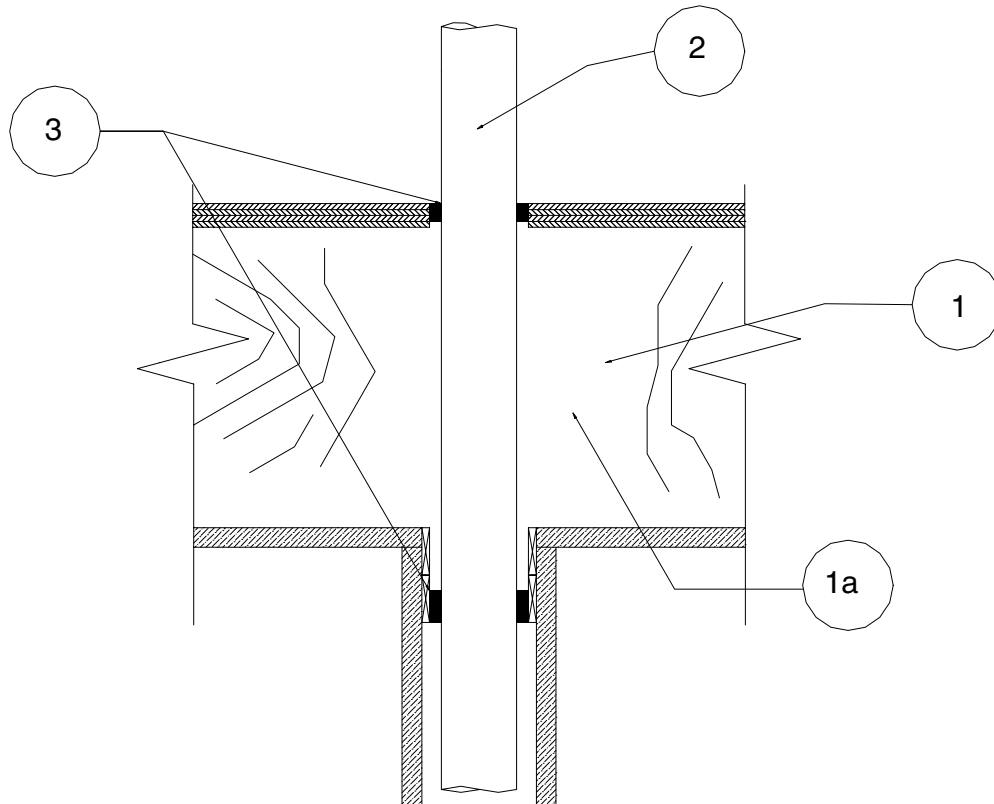
Design No: RQ/PH 60-01

Horizontal (floor ratings: see table below)

Hole size: see Item 3

Tested to ASTM E-814 and CAN4-S115M at 50 Pa Pressure Differential

Penetrant	Pipe Size	CAN/ULC-S115 CAN4-S115 F, FH, FT, FTH	ASTM E-814 F, T
ccPVC	1-½" to 3"	1 hr	1 hr
PVC	1-½" to 3"	1 hr	1 hr
CPVC	1-½" to 3"	1 hr	1 hr
ccABS	1-½" to 3"	1 hr	1 hr
ABS	1-½" to 3"	1 hr	1 hr
PEX	½" Max.	1 hr	1 hr



tyco
Electrical &
Metal Products

1-800-483-3473
www.easternwire.com



Copyright © 2004 by Eastern Wire + Conduit. All rights reserved.
Eastern Wire + Conduit reserves the right to change product design and specifications without notice.
Eastern Wire + Conduit and Tyco are registered trademarks or trademarks of Tyco and/or its affiliates in the United States, Canada, and/or other countries.
All other brand names, product names, or trademarks belong to their respective holders.

Eastern Wire + Conduit

FIRESTOP Product Specifications

1. **Floor/Ceiling Assembly:** Code conforming 1 hr rated floor/ceiling assembly, framed with minimum nominal 2" x 10" solid sawn or manufactured wood joists. Topping optional (not shown).
- 1a. **Chase Wall:** Rated or non-rated wood or steel gypsum wallboard assembly to have firestop system installed as detailed in Item 4, within the annular space in the single and double top plates (or plywood floor).

Design No: RQ/PH 60-01 – *Continued*

2. **Penetrant:** (See table of ratings) ccABS, ABS, ccPVC, PVC, CPVC Schedule 40, DWV or closed (process or supply) applications, and ½" PEX tubing closed system (process and supply). Fittings optional within the piping assembly. Ratings achieved equivalent to that of the fire separation.
3. **Firestop System Component:** for ½" PEX , 1 layer of Eastern Wire + Conduit Quickroll; for all other materials, 2 layers of Eastern Quickroll installed at both double top plate and single sole plate locations. Quickroll to be installed ¼" recessed from the exposed face of the double top plate and sole plate, according to manufacturer's installation instructions. Sealant optional (Eastern IC Sealant) for smoke seal.

Nominal Pipe Size	Maximum Hole Size
½" PEX	1 1/8"
1-½"	2-½"
2"	3"
3"	4-½"



1-800-483-3473
www.easternwire.com

