

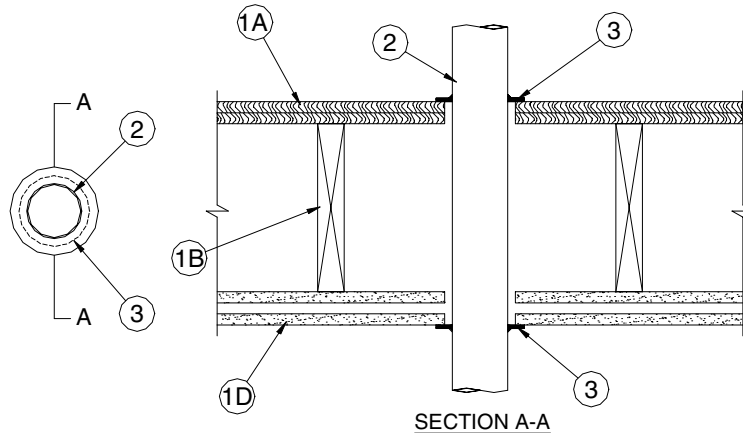
# Eastern Wire + Conduit

## FIRESTOP Product Specifications

### SYSTEM NO. F-C-1099

<b>F Rating</b>	- 1 and 2 Hr (see item 1)
<b>T Rating</b>	- 0 and 1 Hr (see item 1)

#### GUIDE XHEZ THROUGH - PENETRATION FIRESTOP SYSTEMS



- 1. Floor Ceiling Assembly** - The 1 hr fire-rated solid or trussed lumber joist floor-ceiling assembly shall be constructed of the materials and in the manner specified in the individual L500 Series Floor-Ceiling Designs in the UL Fire Resistance Directory. The 2 hr fire-rated wood joist floor-ceiling assembly shall be constructed of the materials and in the manner specified in Design Nos. L505, L511 or L536 in the UL Fire Resistance Directory. The general construction features of the floor-ceiling assembly are summarized below:
  - A. Flooring System** - Lumber or plywood subfloor with finish floor of lumber, plywood or **Floor Topping Mixture\*** as specified in the individual Floor-Ceiling Design. Max diam of floor opening is 4 in.
  - B. Wood Joists\*** - For 1 hr fire-rated floor-ceiling assemblies nom 10 in. deep (or deeper) lumber, steel or combination lumber and steel joists, trusses or **Structural Wood Members\*** with bridging as required and with ends firestopped. For 2 hr fire-rated floor-ceiling assemblies, nom 2 by 10 in. lumber joists spaced 16 in. OC with nom 1 by 3 in. lumber bridging and with ends firestopped.

**tyco**  
Electrical &  
Metal Products

1-800-483-3473  
[www.easternwire.com](http://www.easternwire.com)



# Eastern Wire + Conduit

## FIRESTOP Product Specifications

- C. **Furring Channels - (Not Shown)** - In 2 hr fire-rated assemblies, resilient galv steel furring installed perpendicular to wood joists between first and second layers of gypsum board (Item 1D). Furring channels spaced max 24 in. OC. In 1 hr fire-rated assemblies, resilient galv steel furring installed perpendicular to wood joists between wallboard and wood joists as specified in the individual Floor-Ceiling Design. Furring channels spaced max 24 in. OC.
- D. **Gypsum Board\*** - Nom 4 ft wide by 5/8 in. thick as specified in the individual Floor-Ceiling Design. First layer of gypsum board secured to wood joists or furring channels as specified in the individual Floor-Ceiling Design. Second layer of gypsum board (2 hr fire-rated assembly) screw-attached to furring channels as specified in the individual Floor-Ceiling Design. Max diam of ceiling opening is 4 in.

**The hourly F Ratings of the firestop system are equal to the hourly fire rating of the floor-ceiling assembly in which it is installed. The hourly T Ratings of the firestop system are 0 and 1 Hr for 1 and 2 Hr F Rated floor/ceiling assemblies, respectively.**

2. **Through Penetrants** - One metallic pipe, conduit or tubing centered within the firestop system. The annular space between pipe, conduit or tubing and periphery of opening shall be 7/16 in. Pipe, conduit or tubing to be rigidly supported on both sides of floor assembly. The following types and sizes of metallic pipes, conduits or tubing may be used:
- A. **Steel Pipe** - Nom 6 in. diam (or smaller) Schedule 10 (or heavier) steel pipe.
  - B. **Iron Pipe** - Nom 6 in. diam (or smaller) cast or ductile iron pipe.
  - C. **Conduit** - Nom 4 in. diam (or smaller) steel electrical metallic tubing or rigid galv steel conduit.
  - D. **Copper Tubing** - Nom 3 in. diam (or smaller) Type DWV (or heavier) copper tubing.
  - E. **Copper Pipe** - Nom 3 in. diam (or smaller) Regular (or heavier) copper pipe.
3. **Firestop Devices\*** – Firestop device sized to fit specific diam of the through penetrant and installed on both sides of the floor/ceiling assembly. Collar to be positioned without removing the packaging label. Slide the collar over the penetrating item such that the black intumescent pad will contact the floor and ceiling assembly. Remove label. Position collar firmly against floor and ceiling assembly. Firmly depress three equally spaced barbs to secure the collar to the penetrant.

**Eastern Wire + Conduit – Raceway collar**

\* Bearing the UL Classification Marking

**tyco**

Electrical &  
Metal Products

1-800-483-3473

[www.easternwire.com](http://www.easternwire.com)

