

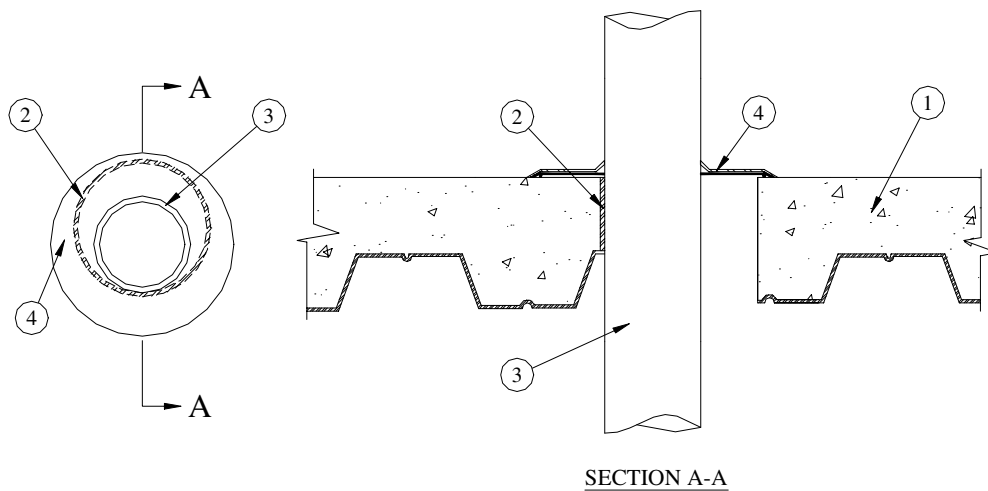
# Eastern Wire + Conduit

## FIRESTOP Product Specifications

### SYSTEM NO. F-A-1001

<b>F Rating</b>	- 2 Hr
<b>FT Rating</b>	- 0 Hr
<b>FH Rating</b>	- 0 Hr
<b>FTH Rating</b>	- 0 Hr

GUIDE XHEZ THROUGH - PENETRATION FIRESTOP SYSTEMS  
CERTIFIED FOR CANADA



- 1. Floor Assembly** – The fire rated concrete and unprotected steel floor assembly shall be constructed of the materials and in the manner specified in the individual D900 Series designs in the UL Fire Resistance Directory and as summarised below:

**A. Concrete** - Min. 64 mm (2-1/2 in.) thick lightweight or normal weight 1600-2400 kg/m<sup>3</sup> (100-150 pcf) concrete topping, as measured from the top of the steel floor units.

**B. Steel Floor and Form Units\*** - Composite or non-composite max 76 mm (3 in.) deep galv fluted units as specified in the individual Floor-Ceiling Design. Max diam of opening is 102 mm (4 in.).

- 2. Sleeves** - (Optional) - One of the following types and sizes of sleeves is to be used:

**tyco**  
Electrical &  
Metal Products

1-800-483-3473  
[www.easternwire.com](http://www.easternwire.com)

**EASTERN**  
wire + conduit

## Eastern Wire + Conduit

### FIRESTOP Product Specifications

- A. **Through-Penetrating Products\*** - Nom 102 mm (4 in.) diam (or smaller) solid or longitudinal split sleeve cast or grouted into floor. Sleeve to be installed flush with both surfaces of floor assembly.

#### Eastern Wire + Conduit - Quickstop Sleeve

- B. **Metallic Sleeve** - Nom 102 mm (4 in.) diam (or smaller) sleeve fabricated from min 0.889 mm (0.035 in.) thick (No. 22 gauge) galv steel cast or grouted into floor. Sleeve to be installed flush with both surfaces of floor assembly.
- B. **Combination Sleeve** - Nom 4 in. diam (or smaller) solid sleeve installed flush with bottom of floor slab and extending min 0 in. (flush) to max 2 in. above top of floor or both sides of wall. Min 0.035 in. thick (No. 22 gauge) galv sheet steel tightly wrapped around the PVC sleeve, having a min 2 in. lap along the longitudinal seam and secured to sleeve with No. 16 gauge steel tie wire at midpoint. Sheet steel to be embedded min 1 in. into concrete and extend to the top edge of the PVC sleeve.

#### Eastern Wire + Conduit - Quickstop Sleeve

3. **Through Penetrants** - One metallic pipe, conduit or tubing to be installed concentrically or eccentrically within the firestop system. The annular space between pipe, conduit or tubing and periphery of opening shall be min 0 mm (0 in.) point contact to max 43 mm (1-11/16 in.). Pipe, conduit or tubing to be rigidly supported on both sides of floor assembly. The following types and sizes of metallic pipes, conduits or tubing may be used:
- A. **Steel Pipe** - Nom 76 mm (3 in.) diam (or smaller) Schedule 5 (or heavier) steel pipe.
- B. **Iron Pipe** - Nom 76 mm (3 in.) diam (or smaller) cast or ductile iron pipe.
- C. **Conduit** - Nom 76 mm (3 in.) diam (or smaller) steel electrical metallic tubing or steel conduit.
- D. **Copper Tubing** - Nom 76 mm (3 in.) diam (or smaller) Type DWV (or heavier) copper tubing.
- E. **Copper Pipe** - Nom 76 mm (3 in.) diam (or smaller) Regular (or heavier) copper pipe.
4. **Firestop Devices\*** – Firestop device sized to fit specific diam of the through penetrant and installed on top of the floor abutting concrete. Collar to be positioned without removing the packaging label. Slide the collar over the penetrating item such that the black intumescent pad will contact the floor assembly. Remove label. Position collar firmly against floor assembly. Firmly depress 3 equally spaced barbs to secure the collar to the penetrant.

#### Eastern Wire + Conduit- Raceway Collar

\* Bearing the UL Classification Marking

**tyco**

Electrical &  
Metal Products

1-800-483-3473

[www.easternwire.com](http://www.easternwire.com)

