

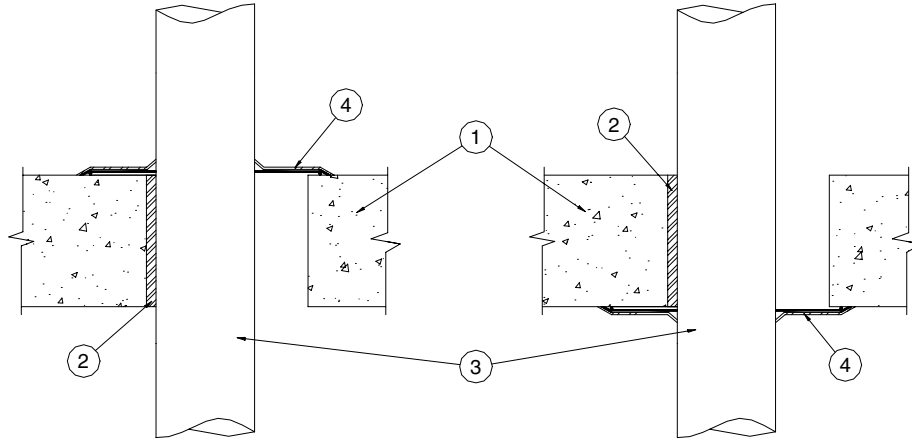
# Eastern Wire + Conduit

## FIRESTOP Product Specifications

SYSTEM NO. C-AJ-1457

F Rating - 2 Hr  
T Rating - 0 Hr

GUIDE XHEZ THROUGH - PENETRATION FIRESTOP SYSTEMS



1. **Floor or Wall Assembly** - Min 2-1/2 in. thick reinforced lightweight or normal weight (100-150 pcf) concrete. Wall may also be constructed of any UL Classified **Precast Concrete Units\***. Wall may also be constructed of any UL Classified **Concrete Blocks\***. Max diam of opening is 12 in. Max diam of opening in hollow-core precast concrete unit floor is 7 in.

See **Concrete Blocks (CAZT)** or **Precast Concrete Units (CFTV)** in the Fire Resistance Directory for names of manufacturers.

2. **Sleeves** - (Optional) - One of the following types and sizes of sleeves may be used:
  - A. **Through-Penetrating Products\*** - Nom 4 in. diam (or smaller) solid or longitudinal split sleeve cast or grouted into floor or wall. Sleeve to be installed flush with both surfaces of floor or wall assembly.

### Eastern Wire + Conduit - Quickstop Sleeve

- B. **Metallic Sleeve** - Nom 8-1/4 in. diam (or smaller) sleeve fabricated from min 0.035 in. thick (No. 22 gauge) galv steel cast or grouted into floor or wall assembly. Sleeve to be installed flush with both surfaces of floor or wall assembly.

**tyco**  
Electrical &  
Metal Products

1-800-483-3473  
[www.easternwire.com](http://www.easternwire.com)



## Eastern Wire + Conduit

### FIRESTOP Product Specifications

C. **Combination Sleeve** - Nom 4 in. diam (or smaller) solid sleeve installed flush with bottom of floor slab and extending min 0 in. (flush) to max 2 in. above top of floor or both sides of wall. Min 0.035 in. thick (No. 22 gauge) galv sheet steel tightly wrapped around the PVC sleeve, having a min 2 in. lap along the longitudinal seam and secured to sleeve with No. 16 gauge steel tie wire at midpoint. Sheet steel to be embedded min 1 in. into concrete and extend to the top edge of the PVC sleeve.

3. **Through Penetrants** - One metallic pipe, conduit or tubing to be installed concentrically or eccentrically within the firestop system. The annular space between pipes, conduits or tubing and periphery of opening shall be min 0 in. (point contact) to max 2 in. Pipe, conduit or tubing to be rigidly supported on both sides of floor or wall assembly. The types and sizes of metallic pipes, conduits or tubing may be used in the following opening sizes:

Type and size of penetrants	Max Diam of Opening, In.
A. <b>Steel Pipe</b> Nom 3 in. diam (or smaller) Schedule 5 (or heavier) steel pipe. B. <b>Iron Pipe</b> Nom 3 in. diam (or smaller) cast or ductile iron pipe. C. <b>Conduit</b> Nom 3 in. diam (or smaller) steel electrical metallic tubing or steel conduit. D. <b>Copper Tubing</b> Nom 3 in. diam (or smaller) Type DWV (or heavier) copper tubing. E. <b>Copper Pipe</b> Nom 3 in. diam (or smaller) Regular (or heavier) copper pipe.	4
A. <b>Steel Pipe</b> Nom 3 to 6 in. diam Schedule 5 (or heavier) steel pipe. B. <b>Iron Pipe</b> Nom 3 to 6 in. diam cast or ductile iron pipe. C. <b>Conduit</b> Nom 3 to 4 in. diam steel electrical metallic tubing or 3 to 6 in. diam steel conduit. D. <b>Copper Tubing</b> Nom 4 to 6 in. diam Type DWV (or heavier) copper tubing. E. <b>Copper Pipe</b> Nom 3 to 6 in. diam Regular (or heavier) copper pipe.	7-1/2
A. <b>Steel Pipe</b> Nom 8 to 10 in. diam Schedule 5 (or heavier) steel pipe. B. <b>Iron Pipe</b> Nom 8 to 10 in. diam cast or ductile iron pipe.	12

4. **Firestop Devices\*** - Firestop device sized to fit specific diam of the through penetrant and installed on either side of the floor or wall abutting concrete in accordance with the installation instructions provided with the product. When floor is constructed of **Precast Concrete Units\***, anchor must be installed on bottom side of floor. When wall is constructed of **Concrete Blocks\***, collar must be installed on both sides of wall. Collar to be positioned without removing the packaging label.

Slide the collar over the penetrating item such that the black intumescent pad will contact the floor, wall or ceiling assembly. Remove label. Position collar firmly against floor, wall or ceiling assembly. Firmly depress a minimum of three equally spaced barbs to secure the collar to the penetrant. For collar without barbs and as an alternate to depressing the barbs, a stainless steel hose clamp is to be used in accordance with the installation instructions.

#### Eastern Wire + Conduit – Raceway Collar

\*Bearing the UL Classification Mark

**tyco**  
Electrical &  
Metal Products

1-800-483-3473  
[www.easternwire.com](http://www.easternwire.com)

