

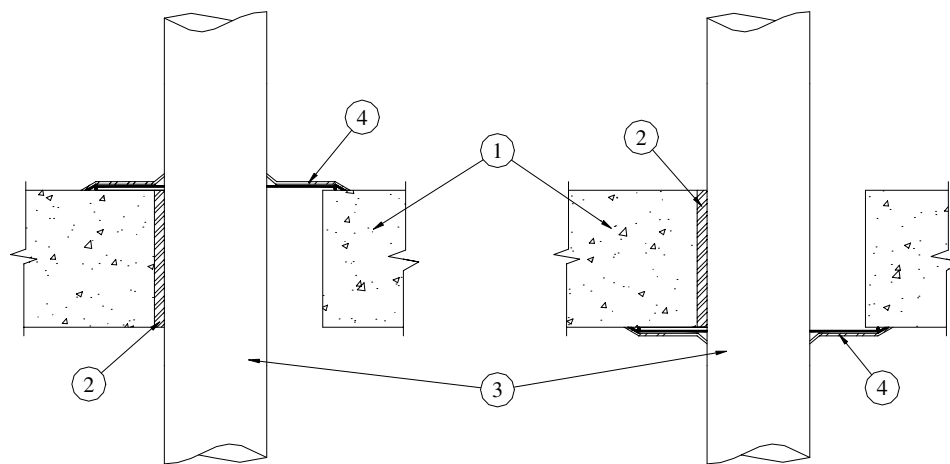
# Eastern Wire + Conduit

## FIRESTOP Product Specifications

SYSTEM NO. C-AJ-1009

**F Rating** - 2 Hr  
**FT Rating** - 0 Hr  
**FH Rating** - 0 Hr  
**FTH Rating** - 0 Hr

GUIDE XHEZ 7 THROUGH - PENETRATION FIRESTOP SYSTEMS  
CERTIFIED FOR CANADA



- 1. Floor or Wall Assembly** - Min 64 mm (2-1/2 in.) thick reinforced lightweight or normal weight 1600-2400 kg/m<sup>3</sup> (100-150 pcf) concrete. Floor may be also constructed of any min 152 mm (6 in.) thick UL Classified hollow-core **Precast Concrete Units**\*. Wall may also be constructed of any UL Classified **Concrete Blocks**\*. Max diam of opening is 102 mm (4 in.).

See **Concrete Blocks** (CAZT) or **Precast Concrete Units** (CFTV) category in the Fire Resistance Directory for names of manufacturers.

- 2. Sleeves** - (Optional) - One of the following types and sizes of sleeves is to be used:

- A. Through-Penetrating Products\*** - Nom 102 mm (4 in.) diam (or smaller) solid or longitudinal split sleeve cast or grouted into floor or wall. Sleeve to be installed flush with both surfaces of floor or wall assembly.

### Eastern Wire + Conduit . - Quickstop Sleeve

**tyco**

Electrical &  
Metal Products

1-800-483-3473

[www.easternwire.com](http://www.easternwire.com)



## Eastern Wire + Conduit

### FIRESTOP Product Specifications

- B. **Metallic Sleeve** - Nom 102 mm (4 in.) diam (or smaller) sleeve fabricated from min 0.889 mm (0.035 in.) thick (No. 22 gauge) galv steel cast or grouted into floor or wall. Sleeve to be installed flush with both surfaces of floor or wall assembly.
- C. **Combination Sleeve** - Nom 4 in. diam (or smaller) solid sleeve installed flush with bottom of floor slab and extending min 0 in. (flush) to max 2 in. above top of floor or both sides of wall. Min 0.035 in. thick (No. 22 gauge) galv sheet steel tightly wrapped around the PVC sleeve, having a min 2 in. lap along the longitudinal seam and secured to sleeve with No. 16 gauge steel tie wire at midpoint. Sheet steel to be embedded min 1 in. into concrete and extend to the top edge of the PVC sleeve.

#### Eastern Wire + Conduit - Quickstop Sleeve

3. **Through Penetrants** - One metallic pipe, conduit or tubing to be installed concentrically or eccentrically within the firestop system. The annular space between pipes, conduits or tubing and periphery of opening shall be min 0 mm (0 in.) point contact to max 43 mm (1-11/16 in.). Pipe, conduit or tubing to be rigidly supported on both sides of floor or wall assembly. The following types and sizes of metallic pipes, conduits or tubing may be used:
- A. **Steel Pipe** - Nom 76 mm (3 in.) diam (or smaller) Schedule 5 (or heavier) steel pipe.
- B. **Iron Pipe** - Nom 76 mm (3 in.) diam (or smaller) cast or ductile iron pipe.
- C. **Conduit** - Nom 76 mm (3 in.) (or smaller) steel electrical metallic tubing or steel conduit.
- D. **Copper Tubing** - Nom 76 mm (3 in.) diam (or smaller) Type DWV (or heavier) copper tubing.
- E. **Copper Pipe** - Nom 76 mm (3 in.) diam (or smaller) Regular (or heavier) copper pipe.
4. **Firestop Devices\*** – Firestop device sized to fit specific diam of the through penetrant and installed on either side of the floor or wall abutting concrete. When floor is constructed of **Precast Concrete Units\***, collar must be installed on bottom side of floor. When wall is constructed of **Concrete Blocks\***, collar must be installed on both sides of wall. Collar to be positioned without removing the packaging label. Slide the collar over the penetrating item such that the black intumescent pad will contact the floor, wall or ceiling assembly. Remove label. Position collar firmly against floor, wall or ceiling assembly. Firmly depress 3 equally spaced barbs to secure the collar to the penetrant.

#### Eastern Wire + Conduit – Raceway Collar

\* Bearing the UL Classification Marking

**tyco**

Electrical &  
Metal Products

1-800-483-3473

[www.easternwire.com](http://www.easternwire.com)

